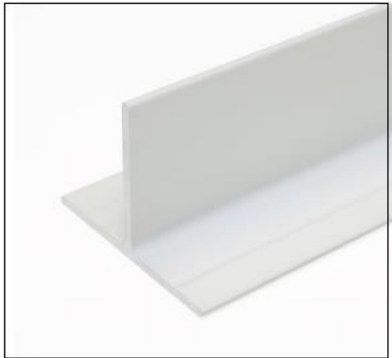




## T DE SUSPENTE 4ML



T aluminium profile 84mm



### Application

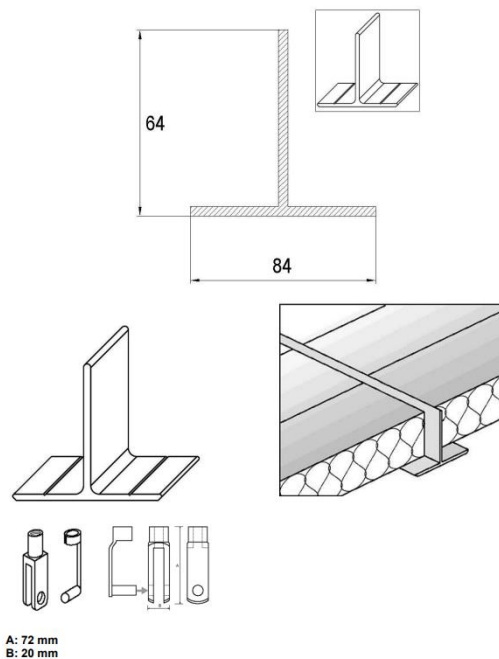
Fixation for ceiling suspensions

### Material

Aluminium

### Technical Drawing

All measurements in mm



## RESULTS TEST REPORT

### Test performed on :

Fixation systems for sandwich panels used as ceiling.

### Test report nr :

2099902/1B – Bureau VERITAS

### Nature of performed tests :

Load testing of ceiling support sections and assembly, as described in CSTB guideline 3626 - May 2008.

### Maximum span between 2 suspensions :

Maximum distance between 2 suspension points = 1500 mm

Aluminium T (84 x 64 x 3.5 mm) with fixation M10

Loading test of ceiling support section T profile (in accordance with chapter 1 CSTB guideline GS 2 for ceiling CSTB 3626)

Panel width ( $l$ ) =	1,18 m
Number of suspensions =	2
Safety factor applied to material ( $\gamma_F$ ) = <b>NONE SAFETY FACTOR IS TAKEN IN CONSIDERATION</b>	
Panel weight =	17,93 kg/m <sup>2</sup>
Force of panel due to panel weight (g)	17,6 daN/m <sup>2</sup>

Test performed with span of 1,5 m between suspension points.					
nr	Width model (m)	Length (m)	Fracture force ( $F_v$ ) at the jack (daN)	Fracture resistance on suspension point (daN)	Fracture strength supported by aluminium T suspension by side /ml (daN)
1	2,36	1,50	5766	1473	624
2	2,36	1,50	6104	1557	660
3	2,36	1,50	5207	1333	565
Average			1454	616	